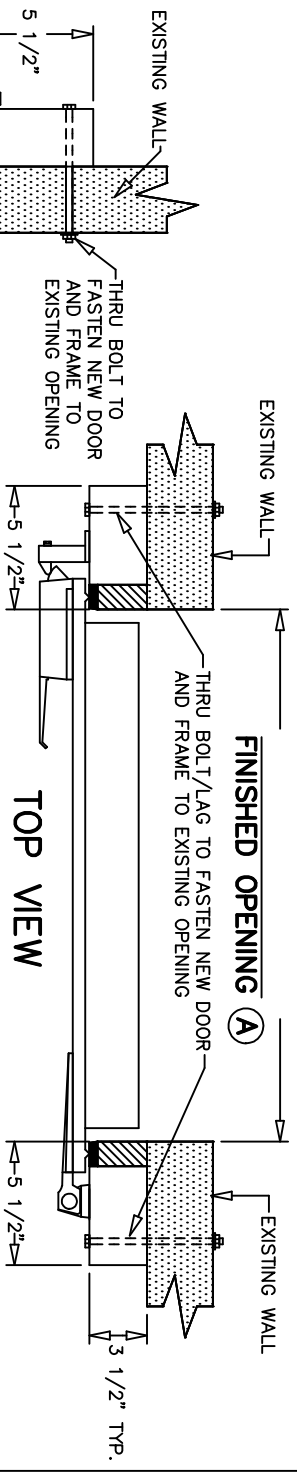


# REPLACEMENT DOOR ORDER FORM #2

## FOR COOLERS & FREEZERS WITH STEP UP FLOOR

**NOTE: DRAWINGS NOT TO SCALE**



PLEASE FILL IN THE APPROPRIATE OPTIONS BELOW, YOU DESIRE FOR THE REPLACEMENT DOOR

### DOOR PANEL FINISH (26 GAUGE)

- INTERIOR  STUCCO GALVANIZED  SMOOTH STAINLESS  
 STUCCO WHITE  
 EXTERIOR  STUCCO GALVANIZED  SMOOTH STAINLESS  
 STUCCO WHITE

### KICK PLATES

- INTERIOR  (STD) 9" ALUM. DIAMOND PLATE  STAINLESS  
 EXTERIOR  (STD) 9" ALUM. DIAMOND PLATE  STAINLESS  
 DOOR HINGE (RH SHOWN ABOVE)

- LEFT  RIGHT

### BOX TYPE

- COOLER  FREEZER  
 (A) FINISHED OPENING WIDTH \_\_\_\_\_  
 (B) FINISHED OPENING HEIGHT \_\_\_\_\_  
 (C) EXISTING FLOOR THICKNESS \_\_\_\_\_

### HEATED DOOR SEAL (FREEZER ONLY)

- YES  NO

### HEAVY DUTY SPRING ACTION DOOR CLOSER

- YES  NO

### STRIP CURTAIN

- YES  NO

### WINDOW

- YES  NO SIZE: \_\_\_\_\_

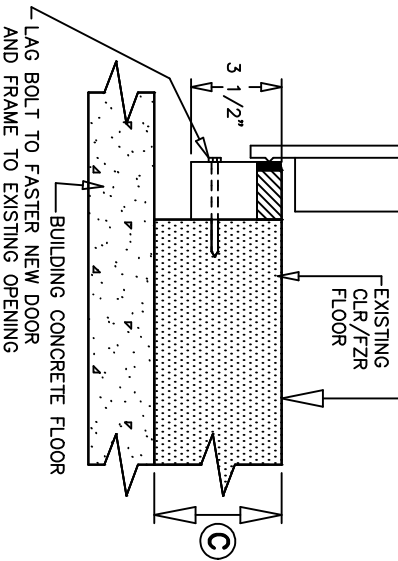
### NOTES/SPECIAL REQUESTS:

\_\_\_\_\_

\_\_\_\_\_

\_\_\_\_\_

### ELEVATION VIEW



AMERICAN COOLER TECH.  
 900 GRANDALL PARKWAY  
 LAWRENCE, MI 49064  
 PHONE: 269-674-8144  
 FAX: 269-674-3561  
 www.americancooler.com

CONTACT NAME: \_\_\_\_\_ PHONE: \_\_\_\_\_

ADDRESS: \_\_\_\_\_ FAX: \_\_\_\_\_

CITY, STATE ZIP: \_\_\_\_\_ EMAIL: \_\_\_\_\_